

# **MSHSL Football Charter Clinician Update**



RAOA Football Meeting – August 18th, 2025

# MSHSL Mechanics Reminders

---

Use the Football Game Officials Manual

All 5 Crew Members Meet with the Head Coach Before the Game

Meet with the Timer(s) Before the Game

LJ with game clock operator, BJ with play clock operator (if present)

LOS Officials Always Switch Sidelines at the Half

Umpire is in the Offensive Backfield on all Plays (except FG/try)

# MSHSL Mechanics/Philosophies Reminders

---

## Scrimmage Kicks (Punts)

LJ position releases at the snap, officiate players

All positions need to cover their zone/area – BJ stay deep

## LOS Officials Stay Put

A large % of high school plays are within 10 yards of LOS

## Umpire Cover the Passer in the Left Side Zone

After he/she crosses your face

Primary for roughing, pass/fumble

## Offensive Holding Needs to be Big

Point of attack, material restriction, category

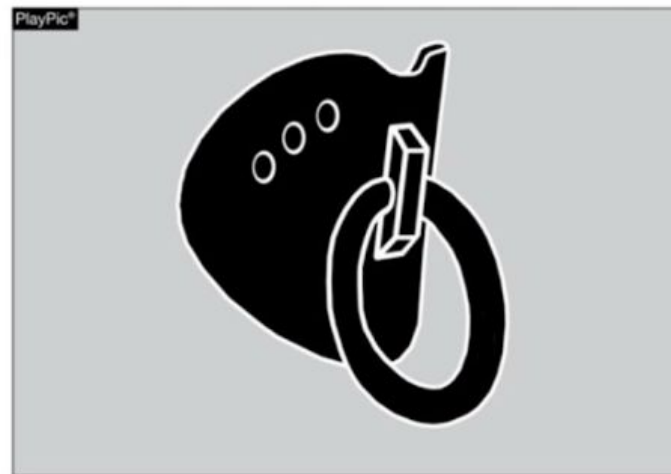
# NEHS Rule Changes for 2025\* Season

## RULES CHANGES

### TOOTH & MOUTH PROTECTOR RULE 1-5-1d(5)a – 5 (NEW)



ILLEGAL



ILLEGAL

Effective 2026: Tooth and mouth protectors may not include anything on them that is a health or risk issue and can pose a danger to themselves or other players.

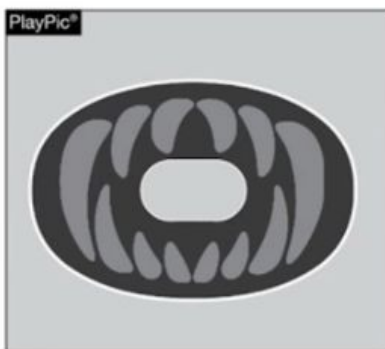
# NEHS Rule Changes for 2025\* Season

## RULES CHANGES

### TOOTH & MOUTH PROTECTOR RULES 1-5-1d(5)a – 4, 5 (NEW)



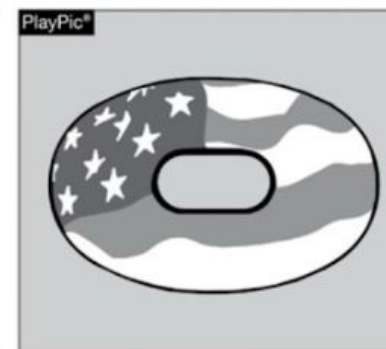
LEGAL



LEGAL



LEGAL



LEGAL

These tooth and mouth protectors neither include attachment(s) that do not serve a purpose and function in protecting the teeth or mouth, nor anything that is a health or risk issue posing a danger and are not impacted by this rule change.

# NEHS Rules Changes for 2025\* Season

## RULES CHANGES

### ARM SLEEVES RULES 1-5-2d (NEW), 1-5-3c(6)



Effective 2027: Arm sleeves, whether attached to a shirt or unattached, manufactured to enhance contact with the football or opponent must meet the SFIA Specification at the time of manufacture.

# NEHS Rule Changes for 2025 Season

## RULES CHANGES

### ELECTRONIC SIGNS RULE 1-5-3c(2)



LEGAL

Fixed electronic signs (non-audio) with play signals are allowed to communicate from the sideline.



# NEHS Rule Changes for 2025 Season

## RULES CHANGES

### ELECTRONIC SIGNS RULE 1-5-3c(2)



ILLEGAL DURING A BETWEEN THE NINE-YARD MARK CONFERENCE

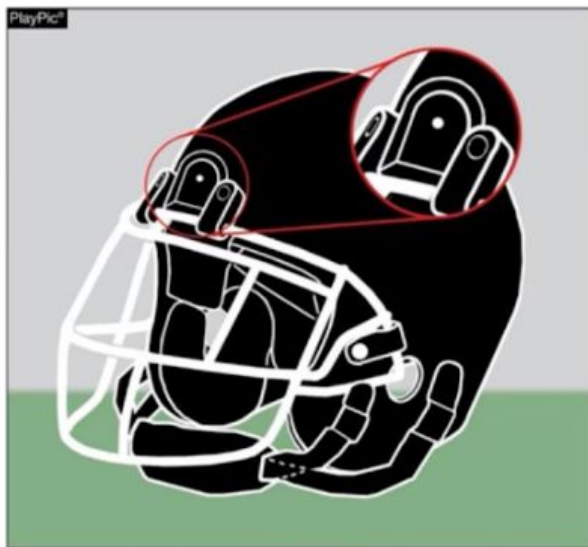
Scrolling graphics, video footage, and connected audio communication are all examples of the use of illegal equipment if this were a between the nine-yard mark conference.



# NEHS Rule Changes for 2025 Season

## RULES CHANGES

### ILLEGAL EQUIPMENT RULE 1-5-3c(3) (NEW)



ILLEGAL



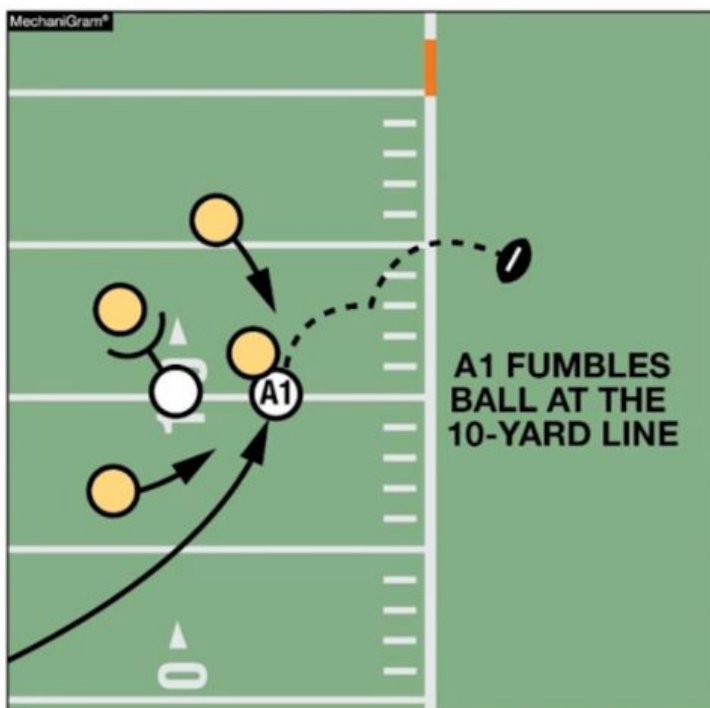
ILLEGAL

Any video (camera) or audio (microphone) device worn by a player during the game is illegal.

# NEHS Rule Changes for 2025 Season

## RULES CHANGES

### FORWARD FUMBLE RULES 3-4-2d, 3-4-3a, 4-3-1 EXCEPTION (NEW)



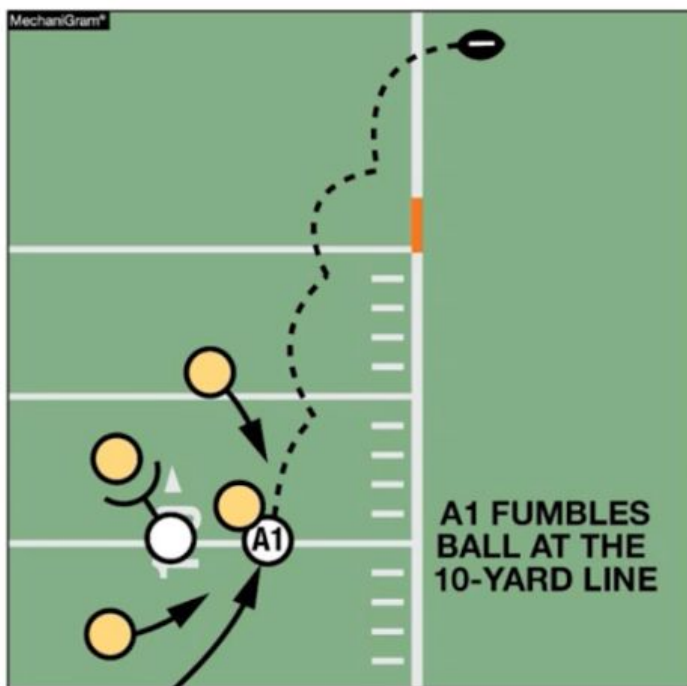
When a forward fumble in the field of play goes out of bounds between the goal lines, the ball shall be returned to the spot of the fumble and the game clock is started on the ready-for-play.

<https://youtu.be/xYSB4piA09M>

# NEHS Rule Changes for 2025 Season

## RULES CHANGES

### FORWARD FUMBLE RULE 4-3-1 EXCEPTION (NEW)

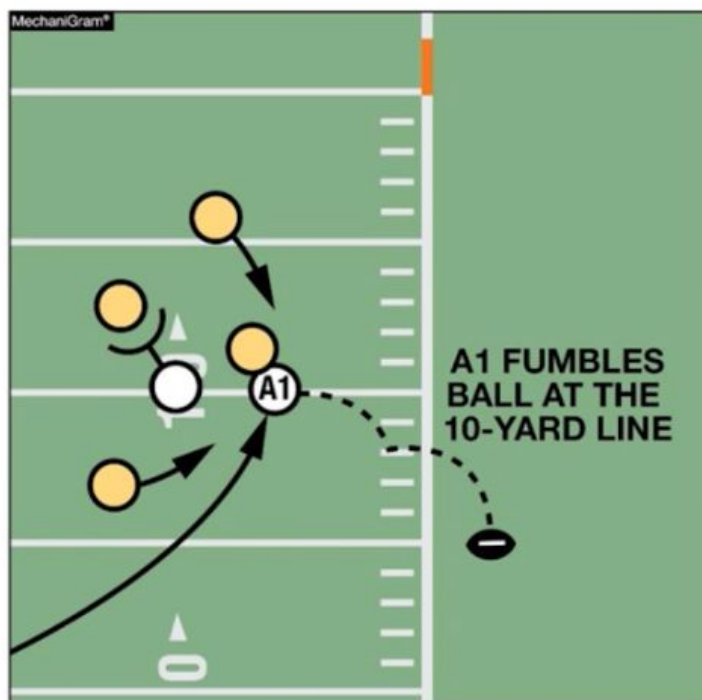


When a forward fumble in the field of play goes into team B's end zone and is ruled out of bounds, the ball is not returned to the spot of the fumble because it did not go out of bounds between the goal lines. This play results in a touchback.

# NEHS Rule Changes for 2025 Season

## RULES CHANGES

### FORWARD FUMBLE RULES 3-4-3a, 4-3-1 EXCEPTION (NEW)



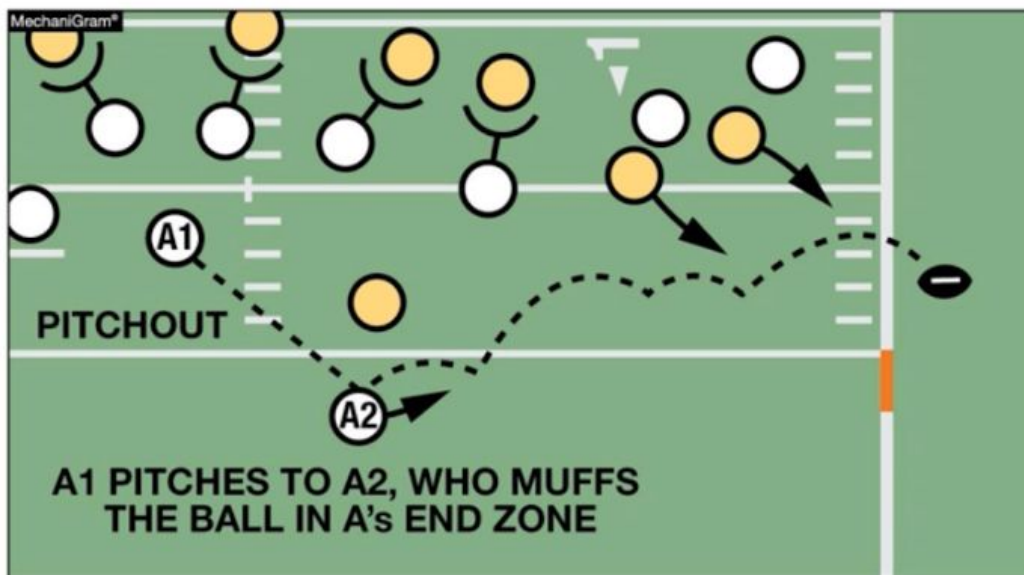
When a backward fumble in the field of play goes out of bounds between the goal lines, the ball shall be spotted where it is ruled out of bounds, and the game clock is started on the snap.



# NEHS Rule Changes for 2025 Season

## RULES CHANGES

### FORWARD FUMBLE RULES 3-4-3a, 4-3-1 EXCEPTION (NEW)



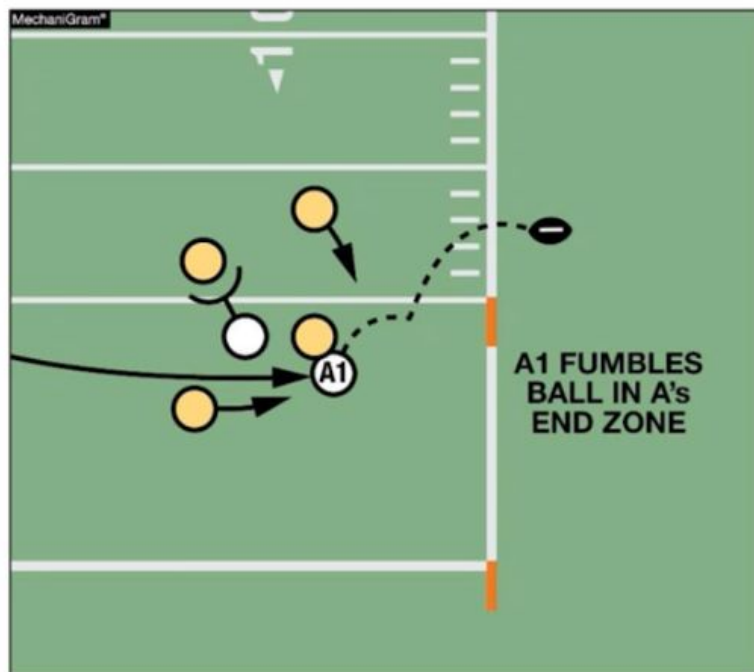
A muffed backward pass going forward and out of bounds does NOT qualify for the EXCEPTION and would be placed at the out of bounds spot and the clock started on the snap.

# NFHS Rule Changes for 2025 Season

## RULES CHANGES

### FORWARD FUMBLE

#### RULES 4-3-1 EXCEPTION (NEW), 8-5-2a EXCEPTION



When a forward fumble by team A from team A's end zone goes out of bounds between the goal lines, the end of the run is in the end zone and the result of the play depends on who caused the ball to be in the end zone. If the momentum exception applies, the ball is placed at the spot where the pass was intercepted, the fumble was intercepted/recovered, or the kick was caught/recovered.

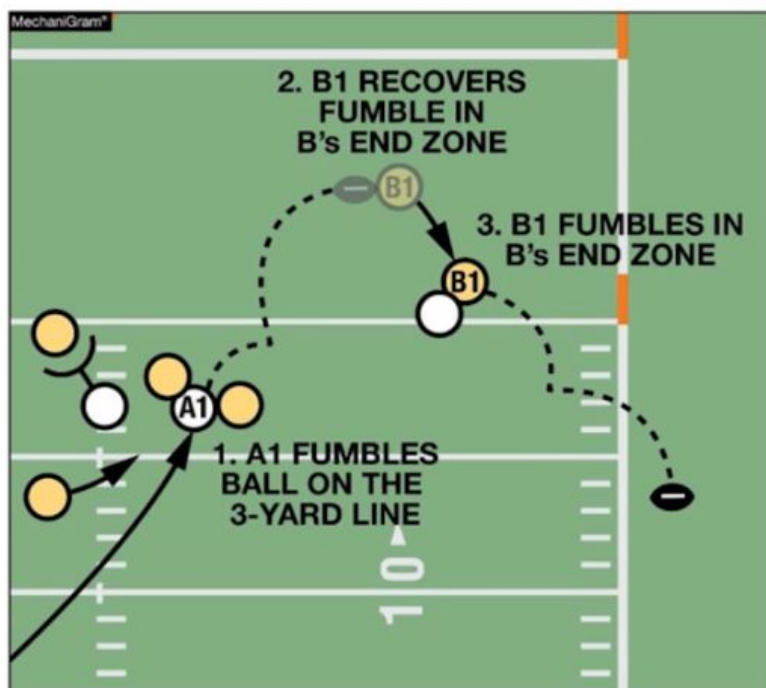


# NEHS Rule Changes for 2025 Season

## RULES CHANGES

### FORWARD FUMBLE

#### RULES 4-3-1 EXCEPTION (NEW), 8-5-2a EXCEPTION



When a forward fumble by team B from team B's end zone goes out of bounds between the goal lines following a change of possession, the end of the related run is where possession was lost by B, and the result of the play depends on who caused the ball to be in the end zone. If the momentum exception applies, the ball is placed at the spot where the pass was intercepted, the fumble was intercepted/recovered, or the kick was caught/recovered.

# NEHS Rule Changes for 2025 Season

## RULES CHANGES

### ILLEGAL PARTICIPATION PENALTY ENFORCEMENT REVISED RULES 9-6 PENALTY, 10-4-4b (DELETED)



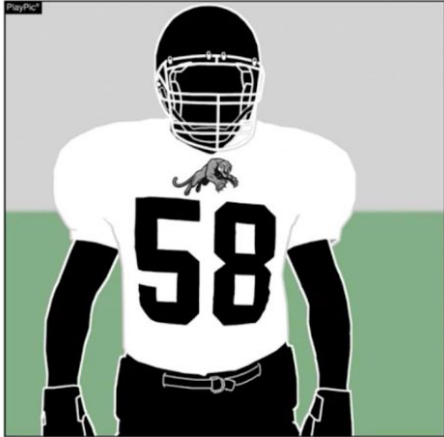
- Revisions to 9-6 PENALTY and the elimination of 10-4-4b have clarified and standardized penalty enforcement, specifically with regards to illegal participation fouls.
- The penalty for all illegal participation fouls has been standardized as “15 yards, live ball, basic spot” enforcement.
- This rule change does not allow a team to gain an advantage by entering and participating during a play.

# Editorial Changes 2025 Season

## EDITORIAL CHANGES

### JERSEY MARKINGS

#### RULES 1-5-1b(2)b(1), 1-5-1b(3)b(1)



A school mascot is considered an allowable adornment to a jersey, in addition to the number, school's nickname, school logo, school name and player name.

## EDITORIAL CHANGES

### DEFENSELESS RECEIVER

#### RULE 9-4-3p (NEW)



**ART. 3 . . .** No player or nonplayer shall: ...

p. Initiate forceful contact against a defenseless receiver as in 2-32-16b and 2-32-16c that is not:

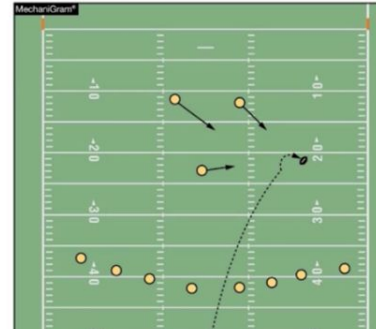
1. Incidental contact as a result of making a play on the ball;
2. Initiated with open hands; or
3. An attempt to tackle by wrapping arm(s) around the receiver.

**PENALTY: 15 Yards (Personal Foul)**

## EDITORIAL CHANGES

### PENALTY ENFORCEMENT

#### RULE 2-33-1a



A loose-ball play is action during a free kick or scrimmage kick other than post-scrimmage kick fouls as defined in 2-16-2h.





# NEHS Points of Emphasis 2025 Season

---

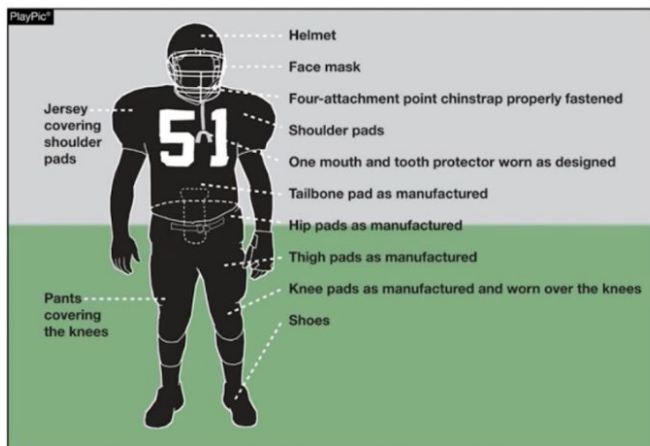
## 2025 NFHS FOOTBALL POINTS OF EMPHASIS



1. Illegal and Improperly Worn Player Equipment
2. Sportsmanship
3. Defenseless Player / Targeting

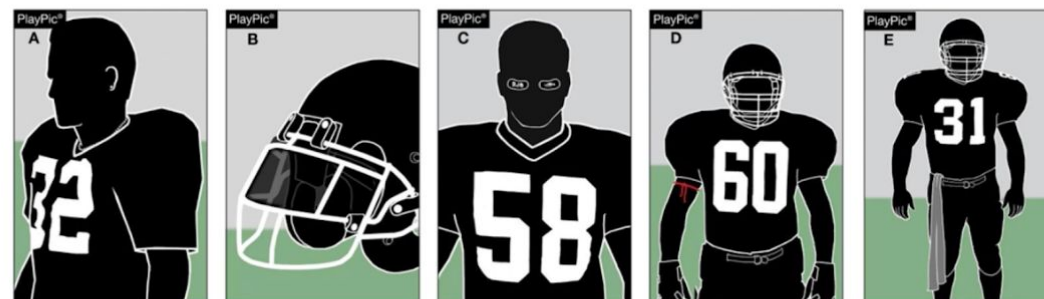
# NFHS Points of Emphasis 2025 Season

## ILLEGAL AND IMPROPERLY WORN PLAYER EQUIPMENT



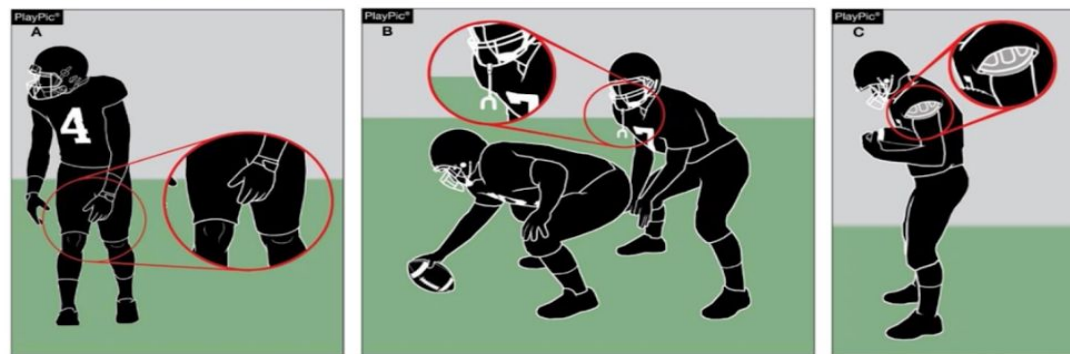
- To support the safety of all participants, players must wear equipment and uniforms that are properly fitted and worn as intended by the manufacturer.
- Before starting each game, the head coach must verify that all players are properly and legally equipped.
- Allowing players to use illegal equipment or to wear required equipment improperly could subject the coach to a penalty.

## ILLEGAL AND IMPROPERLY WORN PLAYER EQUIPMENT



Illegal (prohibited) equipment includes jewelry (A), tinted visors (B), non-compliant eye shade (C), bands worn around the upper arm, neck or legs (D), and uniform adornments like towels that do not conform to rules (E).

## ILLEGAL AND IMPROPERLY WORN PLAYER EQUIPMENT



Improperly worn equipment pertains to all equipment that is otherwise legal but not worn as intended. Examples include pants not covering the knees, tooth and mouth protectors not being worn as play starts and shoulder pads not properly covered by the jersey.

# NEHS Points of Emphasis 2025 Season

## POINTS OF EMPHASIS

### SPORTSMANSHIP



In determining whether an action rises to the level of an unsportsmanlike conduct foul, game officials should allow for brief, spontaneous, emotional reactions at the end of a play. However, game officials should penalize acts that are prolonged, choreographed or directed at an opponent.



# MSHSL Points of Emphasis 2025 Season

---

## Targeting

There **DOES NOT** have to be a “launch” for there to be Targeting and the contact above the shoulders does not have to be made with the helmet.

The rule states: “no player or non-player shall target an opponent.”

Targeting is NOT an automatic ejection in High School football – only eject if the contact is flagrant.

- 15-yard penalty

If contact is high – could be either targeting or excessive contact – same penalty for both.

- ▶ Targeting IS NOT an automatic ejection
- ▶ OK for off official to make the call
- ▶ Error on the side of safety -- when in doubt it is:
  - ▶ Blindside
  - ▶ Forceful contact
  - ▶ Excessive
  - ▶ Targeting

# MSHSL Points of Emphasis 2025 Season

## Risk Minimization

Unnecessary or excessive contact is illegal

- **Whether or not the block or tackle is legal**

Coaches, instruct players to avoid this type of contact.

Taking aim on opponents who are not aware of impending contact or completely out of the play must be eliminated from the game

Such contact is illegal and if flagrant the player will be ejected

## Risk Minimization

Officials must be aware of situations where this illegal contact may occur.

- Blind-side blocks
- Peel-back blocks
- Airborne receivers

Launching and initiating contact vs. defenseless opponents is unnecessary and excessive contact - **Illegal.**

**When in doubt – make this call!!**

## “Playing to the Whistle”

Very often illegal

Ball is dead before the whistle blows

Playing to the whistle can cause illegal personal contact:

- If against a defenseless player:
  - “Cleaning up on the pile” or
  - Contacting a runner already in the grasp of a tackler and whose forward progress has been stopped
- Excessive, unnecessary roughness, unwarranted

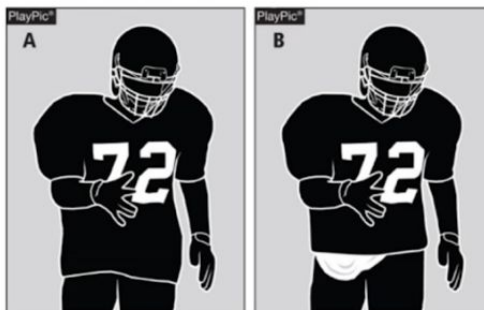
# MSHSL Points of Emphasis 2025 Season

## MINNESOTA POINTS OF EMPHASIS

### Player Equipment Rule 1-5-1b(1)

These jerseys are illegal.

- PlayPic A, the jersey is longer than the top of the pants. Thus, it must be tucked in.
- PlayPic B, the shirt beneath the jersey and jersey must be tucked in.



## MINNESOTA POINTS OF EMPHASIS

### Illegal Equipment Rule 1-5-3-c

Other illegal equipment:

- Eyeshields that:
  - are not constructed of a molded rigid material; or
  - are not clear without the presence of any tint.
    - Can not use even with a doctor's note.
- Playcards not worn on the wrist or arm.
- If required equipment is not worn properly or illegal equipment is detected, the player shall be replaced for one down.
- Coaches- please address these items before the game!

# MSHSL Points of Emphasis 2025 Season

## MINNESOTA POINTS OF EMPHASIS

### MSHSL UNIFORM RULES FOR FOOTBALL

Column A	Column B
 <b>Black</b>	 White
 Dark Gray	 Yellow
 <b>Dark Green</b>	 Gold
 <b>Navy Blue</b>	 Tan
 Royal Blue	 Light Gray
 <b>Dark Purple</b>	 Light Blue
 Dark Brown	 Light Green
 <b>Maroon</b>	 Light Purple
 <b>Red</b>	 Orange
 <b>Cardinal Red</b>	

- Home Jerseys must use shades of colors in Column A
- Body of the number for the home team must come from Column B
- Visiting jerseys must be white and the body of the number must come from Column A
- Trim/outline of numbers is an optional feature that does not impact legality.
- Colors from the same family cannot be used together.  
*e.g. If Royal Blue in Column A is used for the Dark Uniform, Light Blue in Column B cannot be used for the numbers. White is the preferred number color for maximum visibility when the uniform color comes from column A.*

# MSHSL Points of Emphasis 2025 Season

## MINNESOTA POINTS OF EMPHASIS

### Running Time

- Running Time Rule:
  - Only stop the clock for TIPS
    - Timeouts
    - Injuries
    - Penalties
    - Scores
- At 35-point differential in the fourth quarter
  - Cannot be implemented earlier
  - Coaches can agree to shorten quarters, but not alter clock rules

## MINNESOTA POINTS OF EMPHASIS

### Official Warning

When coaches continue to show disregard for the team box or disrespect for officials, officials shall:

- **STOP PLAY**
- Tell the coach: "You have been warned."
- Have the warning recorded on the Official's game card
- Include the time of the warning and team coach.

NO further warnings

Next issue = UNS/Flag -- warnings are not necessary before a coach is flagged

## MINNESOTA POINTS OF EMPHASIS

### Coaches Association Feedback

- Head Coach only feedback to officials
  - Head Coach is responsible for the behavior of the bench area
  - Head Coach is subject to flag for behavior of the bench area
- Assistant Coaches need to work through the head coach
- Head Coach must be at the pregame conference/meeting
- If a team has Co-Head Coaches, only one is designated to speak with officials



# MSHSL Mechanics Updates 2025 Season

## Coin Toss Mechanics

---

Conduct coin toss on home team sideline at the 50 yard line 30 minutes prior to kickoff.

Rationale:

- \*Safety--teams are still in warm-up mode at both ends of the field with captains and officials vulnerable to injury.
- \*Consistent with procedure for state quarterfinal games

## Seven-Person Mechanics

- Likely to be approved for the semi-finals and finals
- Would put us in the best position for coverage
- Will provide opportunities for more officials in the post season



# **MSHSL Mechanics Updates 2025 Season**

---

## **2025-2026 NFHS Football Game Officials Manual Committee Points of Emphasis**

1. Pregame Administration
2. Clock Management
3. The Importance of Dead-Ball Officiating

# MSHSL Information

---

## Retention and Recruitment

We need to keep officials, provide mentorship, recruit new

## Clinic Attendance (In person or via Zoom)

Required every 2 years for postseason consideration, attend each year if possible

## MSHSL Training Videos

Required for state tournament eligibility (all 5/7 crew members) begins soon

## Rules or Mechanics or Philosophy Questions

I (Royce Ruter) am your first point of contact, then Mike Graf (SE Regional Coordinator) – Mike will go to MSHSL as necessary (*possible education for the RAOA football group*)

MSHSL is continuing with the planned pregame medical and administrative timeout meeting. Not mandatory, but the hope is sites will hold these.

# RAOA Educational Opportunities

---

## Hudl Clips

Can be sent to me by anyone

## Ref Masters University - MSHSL private group

Focused on rules and mechanics

Nearly daily new content

*(possible education for the RAOA football group)*

## Likely Hudl Video Review, Possible Observations

## RAOA Position Training Groups